



Peiying Primary School



Briefing for Parents of P1 & P2 Students

2 February 2024
2.00 p.m.



Building Character, Enriching Lives, Stretching Potential



Peiying Primary School

Programme

Welcome Address by School Leader

Briefing by Year Head & Asst Year Head (Lower Primary)

Briefing by Form and Co-Form Teachers





Peiying Primary School

School Leaders

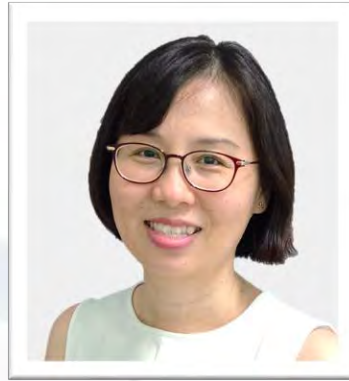




School Leaders



Ms Ng Pei Sun
Vice-Principal
(Academic)



Mrs Peh-Wong Wei Yong
Principal



Mr Abdul Rani Idris
Vice-Principal
(Academic)





Peiying Primary School

Welcome Address by School Leader

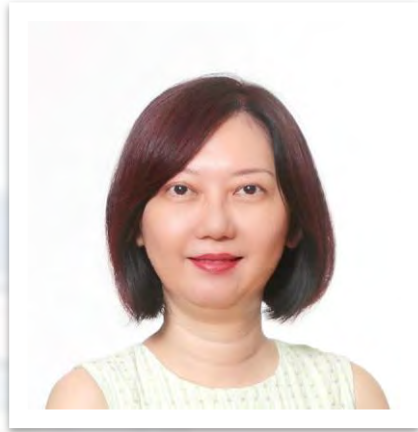




Peiying Primary School

Key Personnel





Ms Rosemarie Wong
Year Head (LP)



Ms Nurhafeza Hanem
Assistant Year Head
(LP)





Peiying Primary School

Vision, Mission, Core Values Student Vision Outcomes



A photograph of four young students in school uniforms (light blue shirts with dark blue collars) looking at a plant with yellow flowers in a garden. The students are smiling and appear to be engaged in a learning activity. The background shows a green lawn and trees.

Vision

Lifelong Learners, Leaders of Character

We aspire to meaningfully pique our students' interest in their learning and encourage them to be lifelong learners.

We focus on character-building and leadership development of our students and are guided by our school values: PRIDE

A solid orange horizontal bar at the bottom of the page.

Mission

Building Character

Enriching Lives

Stretching PoTential



P Perseverance

R Respect

I Integrity

D Diligence

E Empathy

Core Values



School Values

P1 & P2

Perseverance	I will not give up when I face problems.
	I find different ways to solve problems.
Respect	I speak politely and I am kind to others.
	I listen when others are speaking.
Integrity	I will tell the truth and do the right thing.
	I know what is right from wrong.
	I will admit my mistakes if I make them.
Diligence	I complete my work carefully and hand in work on time.
	I put effort into my work.
Empathy	I take care of others.
	I help others.
	I care for the environment.



School Motto

- **Wisdom & Courage**

- **Wisdom to choose**

- **Courage to do the right thing**





**Engaged
Learners**

**Resilient
Learners**

**Student Vision
Outcomes**

**Leaders of
Character**

**Caring
Citizens**





Student Vision Outcomes



P.L.A.Y
Day



Programme
for Active
Learning
(PAL)



Applied Learning
Programme (ALP)

Engaged Learners

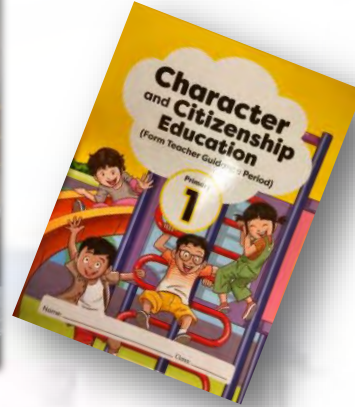
- Show curiosity for learning
- Work with others respectfully
- Take responsibility for their own learning
- Think critically and communicate confidently





Student Vision Outcomes

CCE - FTGP



Resilient Learners

- Develop a growth mindset towards learning
- Stay focused and persevere when faced with difficulties
- Reflect on their thoughts and actions and learn from mistakes
- Adapt and explore different solutions to respond to challenges



Learning for Life Programme





Student Vision Outcomes

Leaders of Character

- Demonstrate strong PRIDE values
- Know right from wrong
- Know their strengths and areas for growth
- Lead confidently



Character Awards and Recognitions - PRIDE Star Awards

The PRIDE Star Award is a school-based award that recognizes outstanding students who demonstrate our school core values PRIDE.





Student Vision Outcomes

Caring Citizens

- **Know and love Singapore**
- **Show kindness and graciousness to people around us**
- **Demonstrate sensitivity to customs and cultural practices in Singapore**
- **Demonstrate awareness and participate actively in school and community events**
- **Adopt healthy habits, develop an awareness of the arts and care for the environment**





Values in Action (VIA)

Our Values-in-Action Programme provides experiential activities for students to be developed as Caring Citizens who have strong sense of civic responsibility towards the community and environment.



Peiying Primary School

Laying the Foundation



Laying the Foundation Well at P1 and P2

- Build a strong foundation for life-long learning, starting from Primary 1.
- Shift the emphasis away from grades to the joy of learning and intrinsic motivation to learn.

ENHANCE
STUDENT
WELL-BEING

PROMOTE
JOY OF
LEARNING

FOSTER AN
ATTITUDE OF
LEARNING
FOR LIFE



Teachers

1. Build on the positive attitudes and dispositions for learning

2. Deepen basic skills and concepts learnt at pre-school by *designing activities to help students see the relevance in their learning as they transit to P1.*

3. Adopt teaching and learning practices which are developmentally appropriate

- *Leverage a range of assessments to provide feedback in academic and non-academic domains*
- *Develop values and character development*

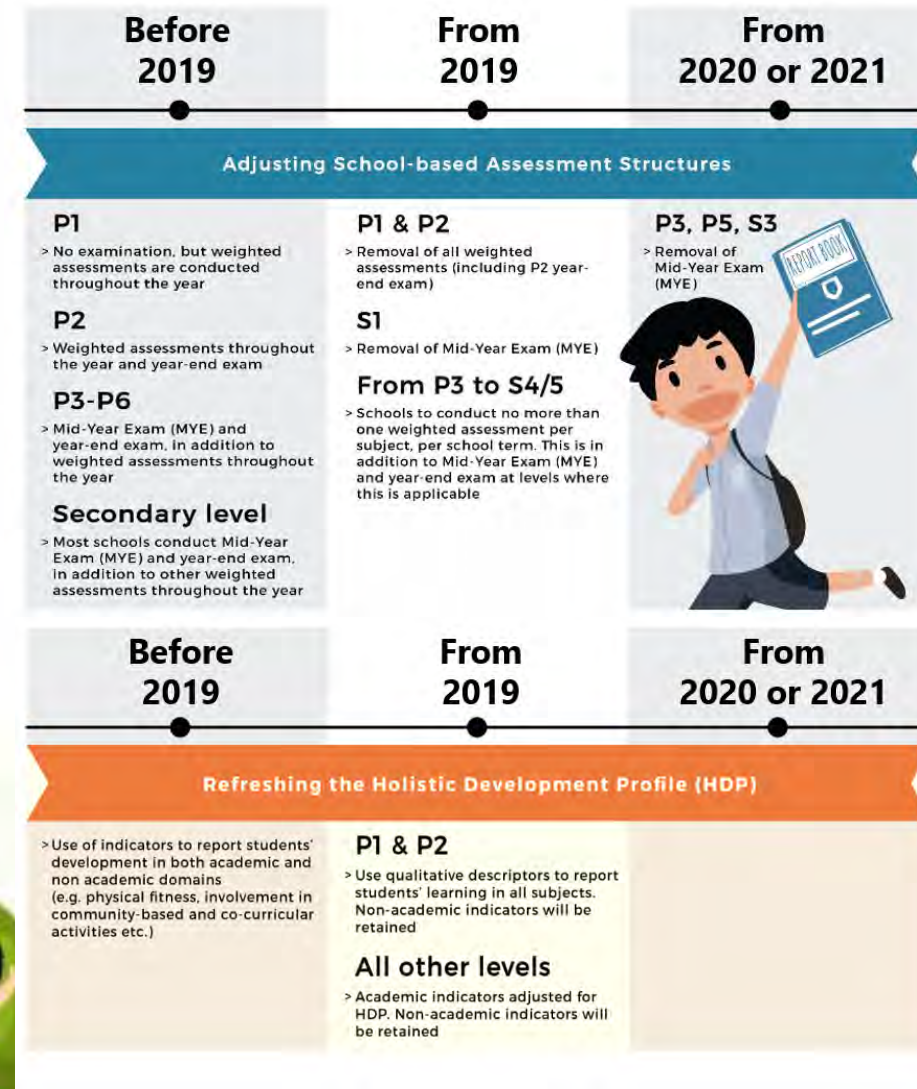


MOE's effort to promote the joy of learning

Adjusting school-based assessment structures (e.g. removal of weighted assessments for P1 and P2 children) to pace out teaching and learning.

Refreshing the Holistic Development Profile to better reflect a child's progress in learning (e.g. use of qualitative descriptors instead of marks in P1 & 2).

Revising the criteria for the Edusave Awards to celebrate children's progress in non-academic aspects.



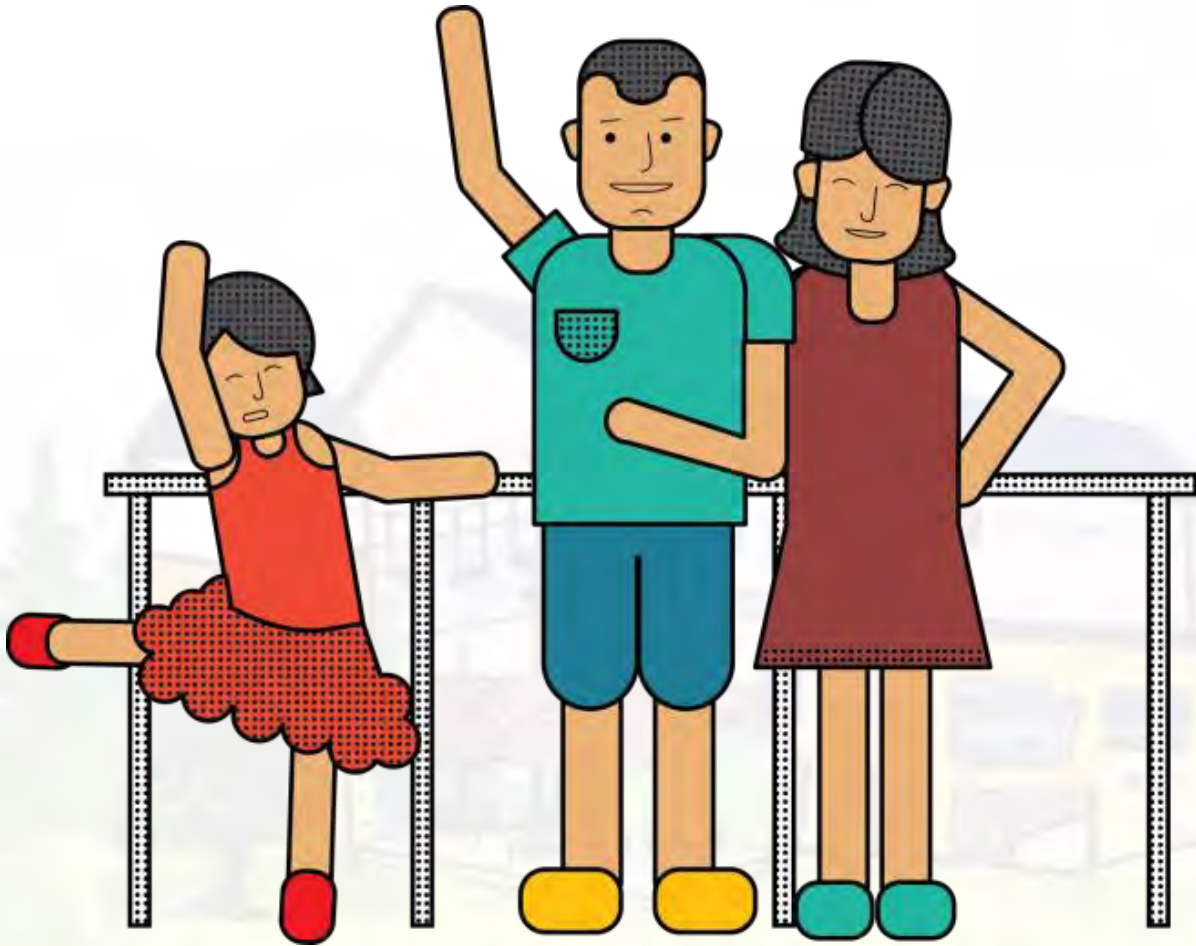


Peiyong Primary School

Home-School Partnership



School-Home Partnership



1. Knowing your child
2. Developing your child
3. Building partnership with the school





Partnership

Encourage Joy of Learning by

- not over-emphasising academic performance
- focus on your child's learning journey, rather than compare them to others

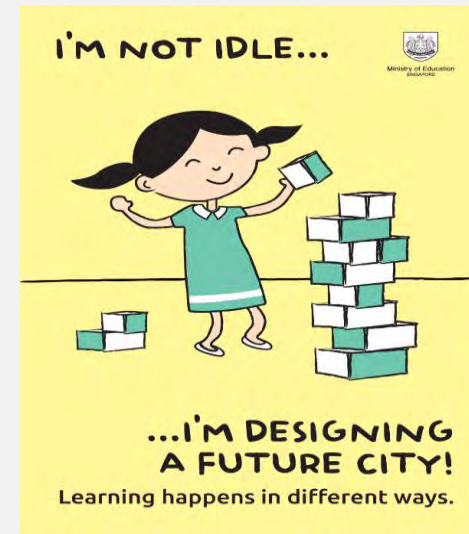
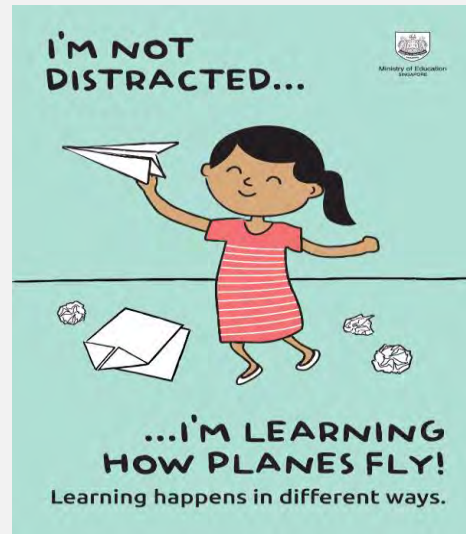




Partnership

With these changes, your child will

- have more time and space to deepen learning
- better enjoy the process of learning
- develop dispositions for lifelong learning





Partnership

Help to enhance your child's mental & physical well-being by;

Sleep

Relationship
with others

Developing
habits and
routines

Punctuality

School
Bag



Partnership

Parent Support Group (PSG)

- Add value to the education of our students through their involvement in school programmes and activities.
- Positive partnership among parents, teachers and the community to make the school a safe place for our students to learn in, making school life more vibrant and caring.



Partnership

Join our PSG

Time

- School programmes and events

Talent

- Volunteer of expertise, talents, individual interests or personal networks

Thoughts

- Brainstorm and contribute constructive feedback and ideas

<https://go.gov.sg/pypsg>



Response Time from Staff

For E-mail correspondence – 3-7-21 guideline applies

- **3 Days – Staff will reply within 3 days for straightforward matters**
- **7 Days – Staff will send a holding reply within 3 days for issues that require further investigation or consultation and respond within 7 to 21 days.**



Staff Well-Being

- **Protect teacher's personal time**
- **Contact teachers during school hours only**
- **Via email or school phone**



Briefing by Year Head (Lower Primary)



Student Recognition

(Edusave Merit Bursary award and Good Progress award)



Edusave Merit Bursary (P1 & P2)

Criteria

- Student who consistently demonstrates positive learning dispositions in the course of the year
- Singapore citizen
- Good conduct
- Satisfy the household income criteria

Maximum 25% of the total student enrolment per level



Good Progress Award (P2)

Criteria

- Student who have showed the greatest improvement in learning dispositions in the course of the year.
- Singapore citizen
- Good conduct

Maximum 10% of the total student enrolment per level



Why are Learning Dispositions important?

Dispositions should be included in learning goals because “the acquisition of knowledge and skills alone does not guarantee that they will be used and applied”.

(Katz, 1993)

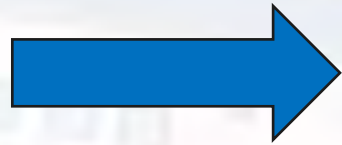


Why are Learning Dispositions important?

Knowledge

+

Skills



Life-long learner

+

Learning

Dispositions



Learning Dispositions

P R I D E	Engaged Learner	<p>Joy of Learning Shows satisfaction from learning skills or discovering new ideas</p>	<p>Regular Attendance Punctual for school Asks questions Respects the opinion shared by others Works harmoniously in a team Does not give up easily when the problem is difficult Completes and hands in class work on time Is clear about his/her goal Is willing to try out ideas Shows strong determination to complete task Ensures task is completed to the best of his/her ability</p>
		<p>Curiosity Open and inquiring mind</p>	
	Leader of Character	<p>Enthusiasm Shows interest in learning things</p>	
	Caring Citizen		
	Resilient Learner	<p>Resilience Is not easily discouraged or give up easily.</p>	



Reporting of P1 & P2 Students' Learning Progress in HDP

Reflection of Learning Outcomes (LOs) & Qualitative Descriptors

For illustrative purposes only.	Holistic Development Profile		
			Date : 6 Nov 2021
	Name :	Jane Ong	Identification No : TXXXX345F
	Age on 1 st Jan :	6	Course : Primary One
		S/N : 5	
	Class :	P1-Respect	
Form Teacher :	Miss Tan		
Co-Form Teacher :	Miss Lui		
SUBJECT			
MATHEMATICS			
• Understand addition and subtraction		Competent	
• Understand numbers up to hundred		Competent	
• Add and subtract numbers		Developing	
• Identify, name, describe and sort shapes		Competent	
• Read and interpret picture graphs		Emerging	





Peiying Primary School

POSB Smart Buddy Programme



The POSB Smart Buddy Programme

- Launched in Aug 2017, the POSB Smart Buddy Programme is the **world's first in-school wearable tech Programme** to enable a contactless payments ecosystem to help cultivate sensible saving and spending habits amongst young students.
- The POSB Smart Buddy Programme has since **received more than 10 international awards and accolades** for innovation, seamless digital payments and excellent customer banking experience.
- It has an **accompanying Smart Buddy mobile app** that allows parents to remotely manage their children's spending, savings and even set saving goals for their children, thereby helping their children cultivate saving habits in a digital and interactive way.
- The POSB Smart Buddy Programme also supports students who **receive school meal subsidies**, providing a **unified payment solution for every student**.
- The current Smart Buddy NETS payment terminals in schools accept the following cards:

Smart Buddy Card/ Watch ¹



School Smartcard/ EZ-Link Card ²



POSB/ DBS ATM Cards (with NETS Contactless logo)



NETS Pre-Paid Card (NPC)



NETS FlashPay



Home Team NS PASSion POSB Debit Card ³



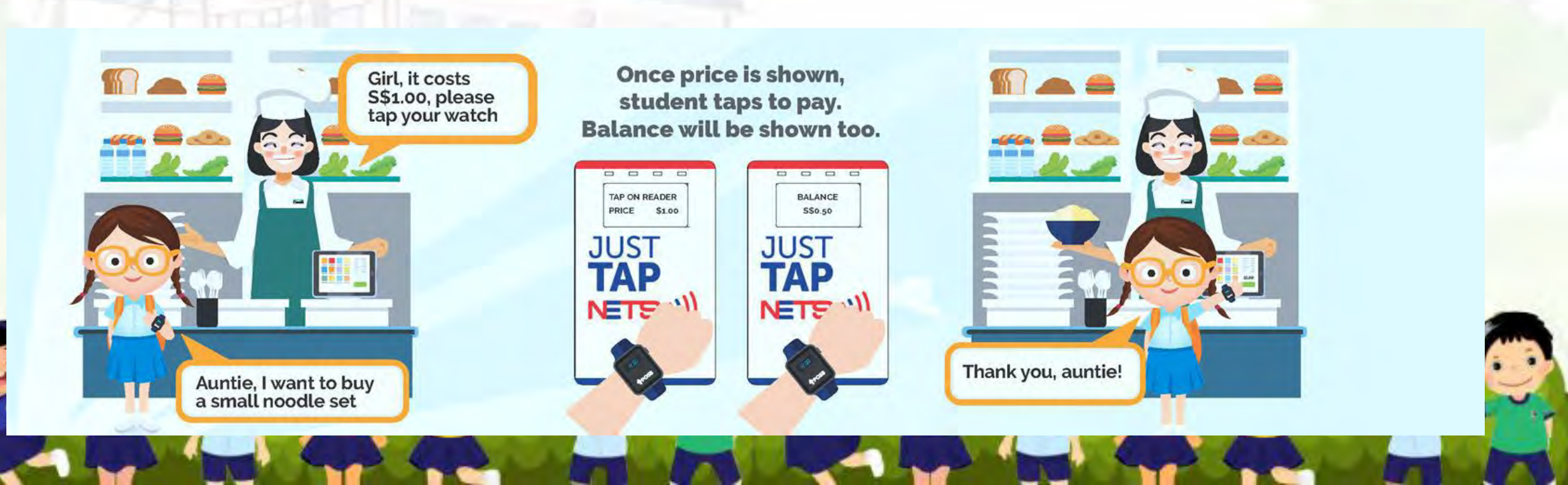
POSB PASSion Card (with NETS Contactless logo)



¹ Parent must have DBS/ POSB bank account
PAS 2.0 cards currently

The POSB Smart Buddy Programme

- With the growing adoption of e-payment in recent years, it would only be a matter of time for e-payment options to be introduced in schools. In fact, students are already exposed to e-payments on a daily basis (e.g., EZ-Link cards for transport and retail purchases).
- All MOE Schools will be invited to come onboard the programme progressively over the next 3 years.
- E-payment is optional, and cash will continue to be accepted.
- Students under Financial Assistance Scheme(FAS) will continue to receive their meal subsidies as per normal. (No changes)



What can you do with POSB Smart Buddy?



For Parents:

Activate and manage your child's Smart Buddy with the mobile app.

Features

- ✔ Manage daily allowance
- ✔ Monitor expenses/savings
- ✔ Set savings goal
- ✔ Create 'Child Access'
- ✔ Link School Smartcard/ EZ-Link Card



For Students:

Tap to pay at the school canteen, school bookshop or any retailers which accepts **NETS** payments.

Note: The Smart Buddy card/ watch is not recommended for public transport. All transit usage will be priced at full adult fare.

Features

- ✔ Tap and Pay
- ✔ Enjoy 10% bonus with Smiley Stamps
- ✔ Set Savings Goal
- ✔ Develop good saving habits



+ Smart Buddy Watch (optional)



Features

- ✔ Date/Time
- ✔ Nickname
- ✔ Fitness Tracker
- ✔ Heart Rate Tracker
- ✔ Reminders

****More information will be posted via Parents Gateway. Please do look out for the announcement****

Benefits to Schools

- ✔ Minimize cash handling
- ✔ Access to transaction data
- ✔ Manage and disburse school meal subsidies





Peiying Primary School

Financial Assistance



Financial Assistance

FAS

Singapore Citizens in financial need can get assistance from MOE on school fees and other expenses.

How do you qualify for MOE FAS?

1. Singaporean students studying in Government and Government-Aided primary and secondary schools, junior colleges, and Millennia Institute.
2. Monthly household income of up to \$3,000 or monthly household income per capita of up to \$750.

For more information on eligibility, please visit MOE website:

<https://www.moe.gov.sg/financial-matters/financial-assistance>





Peiyong Primary School

Safety Matters



Road Safety of Students

For parents who drive....

- drive carefully, reduce vehicle speed and stay alert for pedestrian crossing in school zone
- cooperate with traffic marshals
- let your child alight only at designated drop-off point



Road Safety of Students

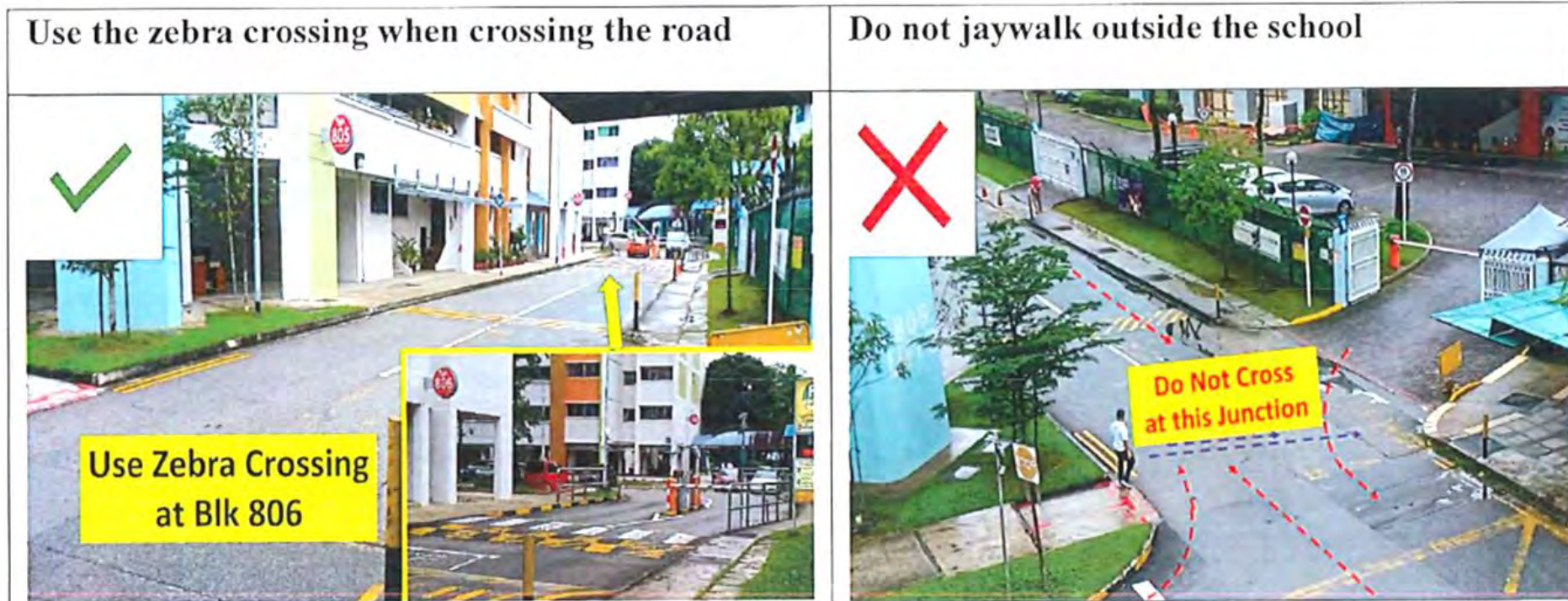


For students who cycle to school...

- they should be accompanied by adults
- parents are to register via FormSG in the school website or scan the QR code if the child is cycling to school
- to park bicycle in school premises



Road Safety of Students



- Students to use pedestrian crossing at blocks 803 and 806 or to enter the school via gate 3 at block 808.



Briefing by Assistant Year Head (Lower Pr)





PEIYONG PRIMARY SCHOOL

Key Programmes



ALP & LLP



Project **T.H.I.N.K.** (*Thinking Holistic Innovative Networked Kids*) for Home Earth

Applied **L**earning
Programme (**ALP**)



Project **T.H.I.N.K.** for Home Earth

What is ALP?

Thinking Holistic Innovative Networked Kids

- Connects classroom learning with real-life applications.
- Focuses on igniting curiosity and joy of learning while developing 21CC: critical & inventive thinking, communication & collaborative skills

FOCUS

- Environmental Education

HOW?

- ALP Curriculum
- Additional resources -Wall murals, Learning Journeys (SEA Aquarium), Farm Space
- Design Thinking (pedagogy)



Environment as the 3rd Teacher



Environment as the 3rd Teacher

Farm Space – High Tech Farming Techniques

- Hydroponics and Aquaponics
- Vegepods



3Es for ALP@Peiyang

Environmental Awareness

- P1 and P2
- Develop awareness of environmental issues
- Demonstrate awareness and exhibit these values in **performance-based environmental education**



Overall ALP Student Learning Outcomes

Aims to mould and develop students who will act responsibly for the environment.

At the end of the six years in Peiying, our students will be able to:

- **P1 – Develop a sense of curiosity and care for the environment.**
- **P2 - Demonstrate care and respect for the environment.**
- P3 - Participate in environment conservation activities.
- P4 – Develop a sense of duty towards the environment.
- P5 – Influence others to act for the environment.
- P6 – Lead others in environment activities.





Sports, Character Development and Adventure Learning Experiences (SCALE)

Learning for Life Programme (LLP) – SCALE @ Peiying

Overview of SCALE@Peiying Programme

SCALE@Peiying is designed to build character through a broad-based sports and outdoor adventure education programme, with experiential learning as the mode of delivery.

Approach	Programme
EDUCATE	Physical Health and Fitness, SEL in PE, P3 P5 SWIMSAFER <u>Outdoor Adventure Education (Level 1 to 3)</u>
EXPERIENCE	6 years Sports Programme, Kids Athletics, Sports Challenge, Endurance Walk/Run, P5 Camp
EXCEL	Lower Primary Games Day (P1 & P2) Annual Track and Field Meet (P3 to P6), Annual Road Run

SEL Term 2 - Empathy [Relationship Management]

Date: _____



Think about the lesson that you took part in. Put a tick or cross in the boxes below.

We helped one another to complete the tasks we had to do.

We thought about the importance of sharing the feelings of others so that all of us could complete our PE group activities.

I feel that:

I listened attentively to my friends.

I can work with them.

I know it is important to share my thoughts respectfully with my friends.

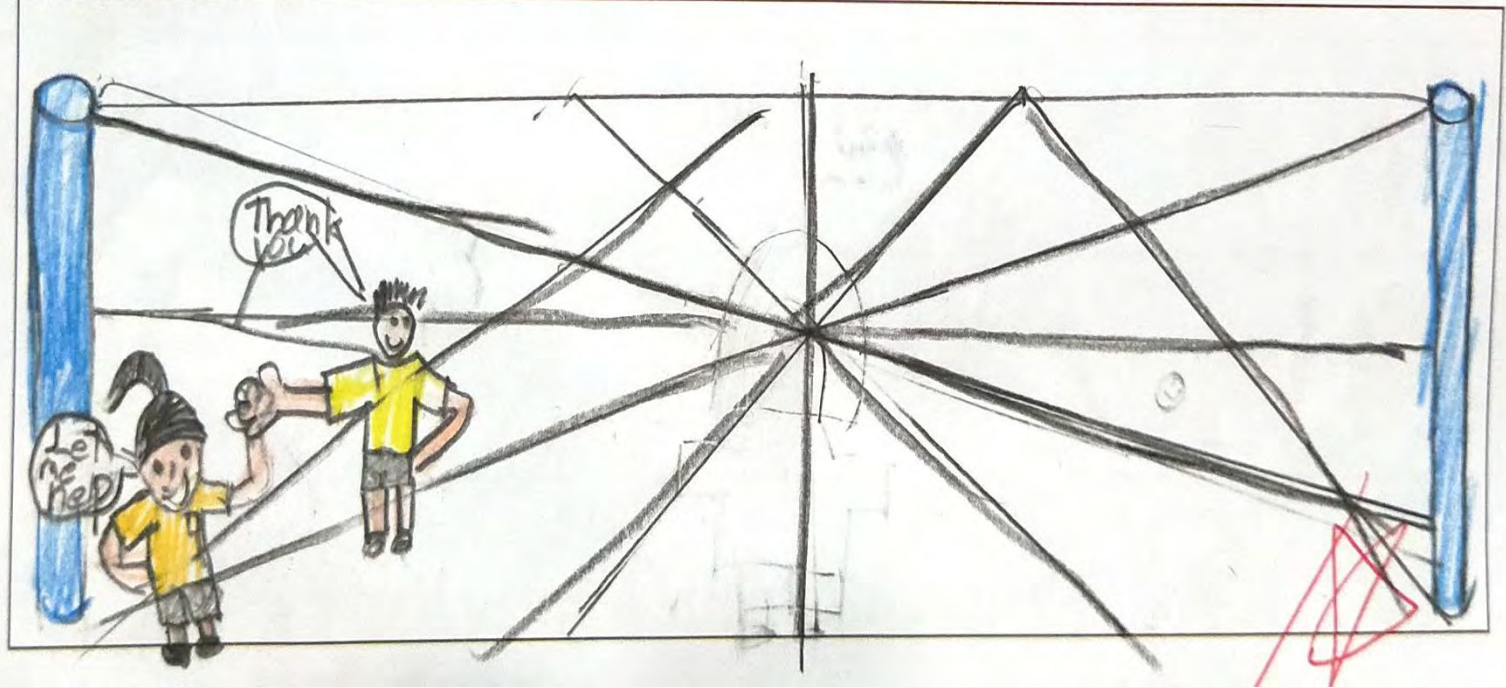
Write or draw one thing that you like most about the lesson.



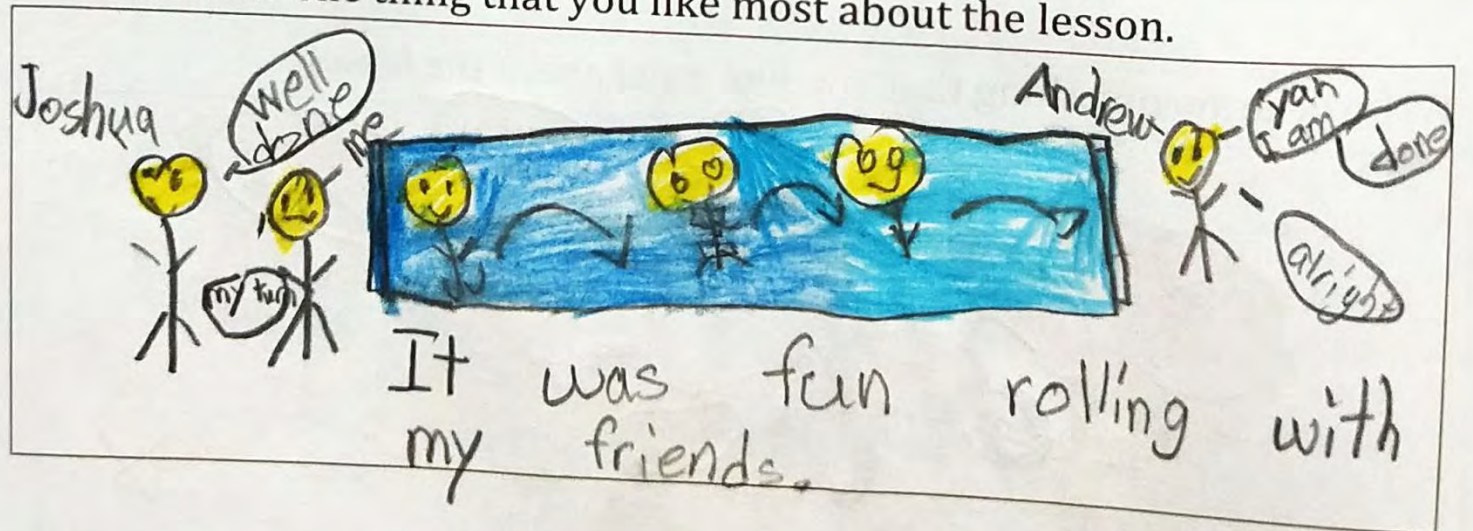
Teacher's Signature/Date _____

Parent's Signature/Date _____

LLP Write or draw one thing that you like most about the lesson.



Write or draw one thing that you like most about the lesson.





Learning with Technology

Learning with Technology



In Peiyong Primary School, we aim to:

- develop confident digital user
- nurture self-directed learners
- develop engaged learners
- nurture resilient students



Learning with Technology

Login example for Primary One to Six students

Accounts	School Laptops	MIMS Portal	SLS
Name	Lim Wei Lin		
MIMS	lim_wei_lin@students.moe.edu.sg		
MIMS Portal Address	https://idp.mims.moe.gov.sg/		
Password	P1 - 2	Your child's teacher will guide your child to log in to their accounts during the ICT lesson	
	P3 - 6	Your child has been guided to change their password during the ICT lesson in week 1.	

Learning with Technology



Ministry of Education
SINGAPORE

MIMS Portal



Applications

Favorites



ICON
ICON Email



MIMS SSPR
MIMS Self Service Password
Reset



SLS
Student Learning System



Learning with Technology

- Model good digital habits for your child.
- Set ground rules for internet use.
- Navigate the internet together to understand their usage.

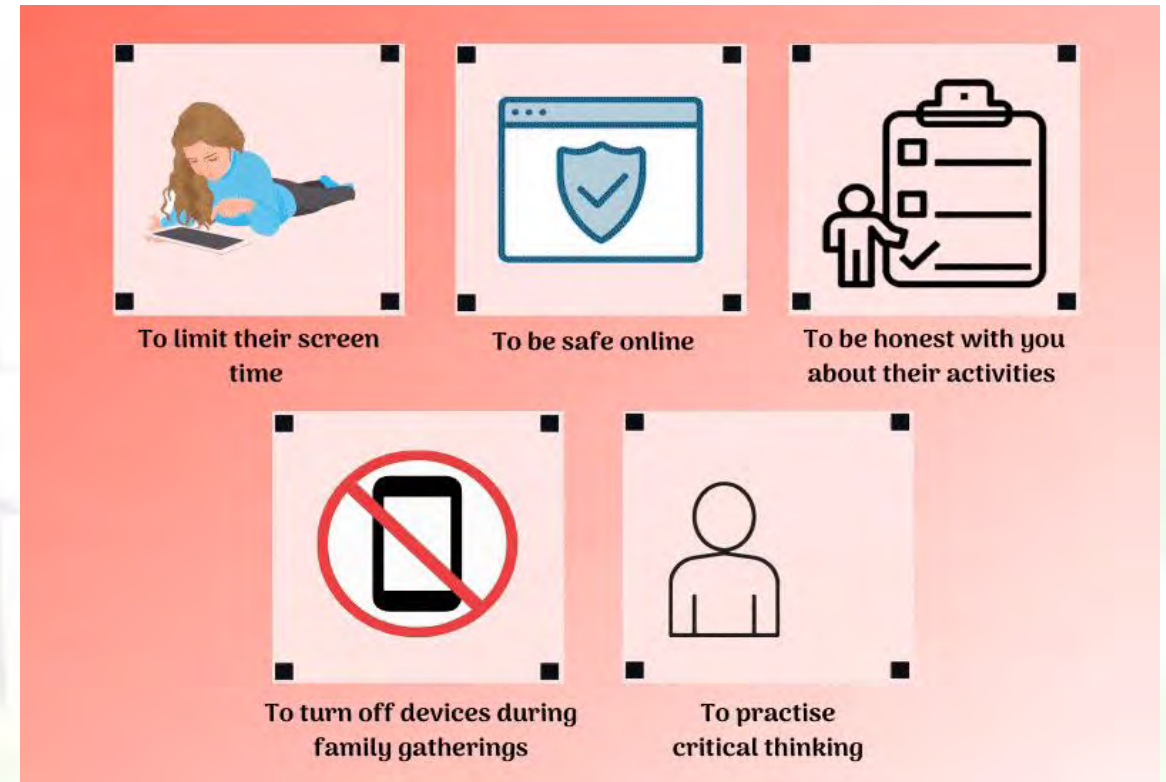


Image credit: educationdestinationasia.com



Social Media



New Facebook Page

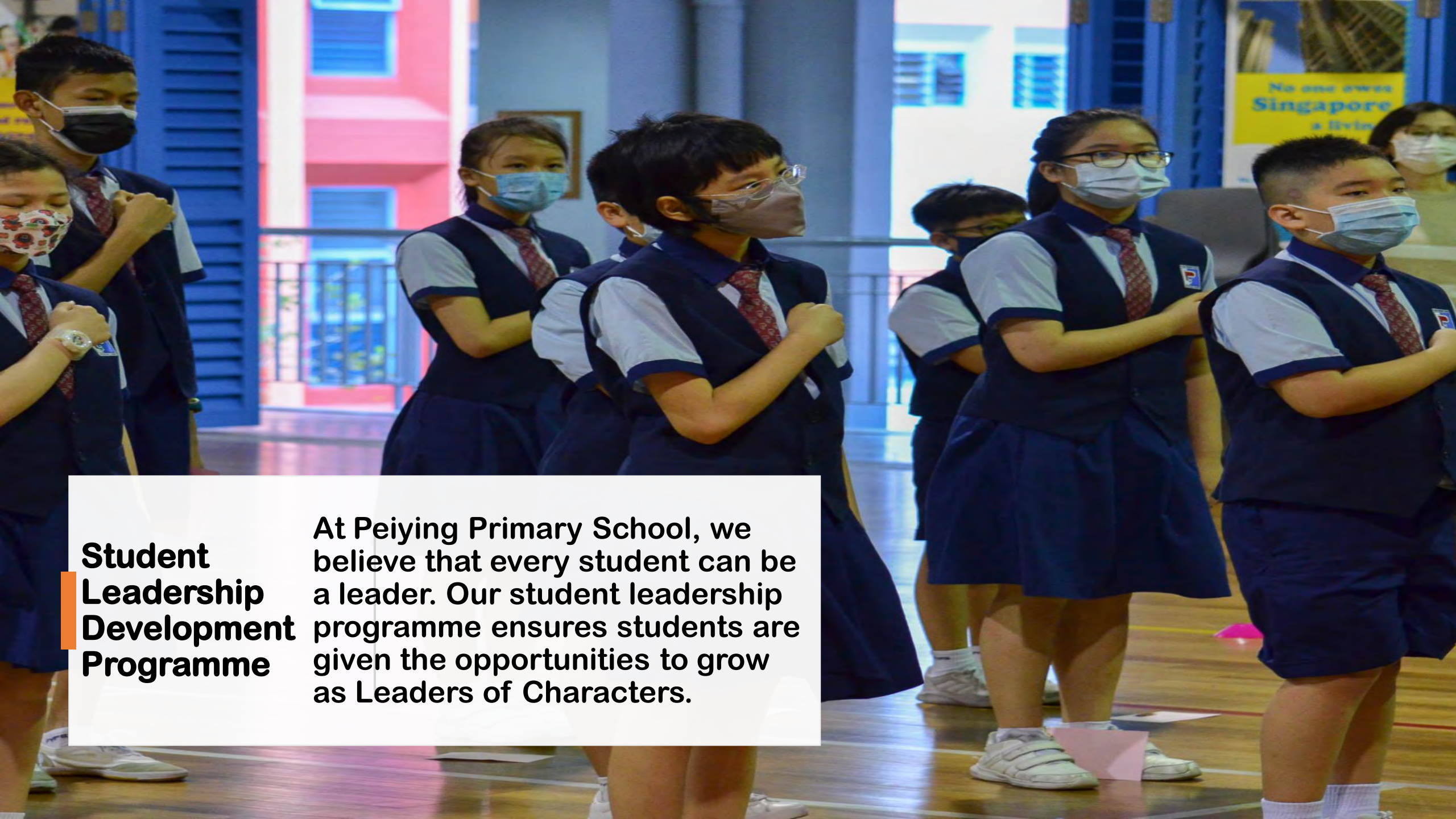


Instagram





Student Development Programmes

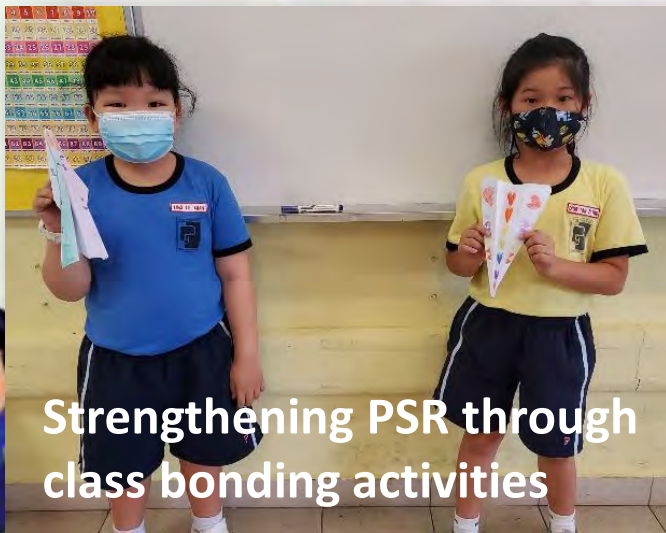


Student Leadership Development Programme

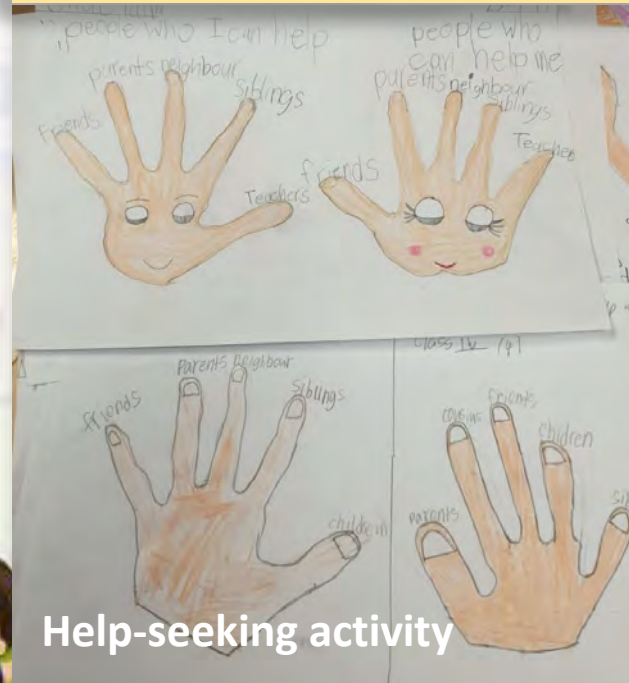
At Peiying Primary School, we believe that every student can be a leader. Our student leadership programme ensures students are given the opportunities to grow as Leaders of Characters.

Peer Support & Relationships (PSR) Programme

A caring school environment is essential for students to feel safe. We provide another layer of caring environment through Peer Support Relationship (PSR) Programme. Through this programme, students build positive peer-peer relationships and strengthen their social network and friendships.



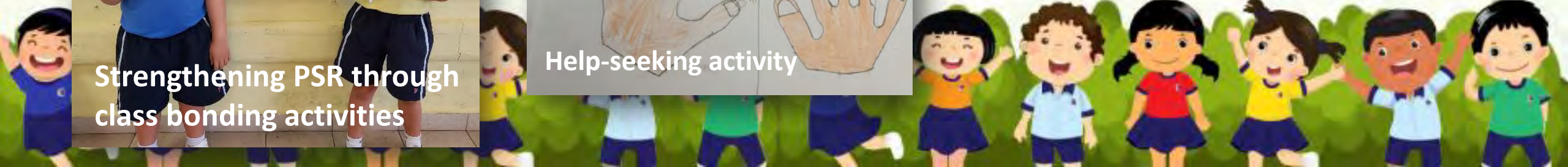
Strengthening PSR through class bonding activities



Help-seeking activity



Peer Buddy Leaders Training



Positive Teacher-Student Relationships

Class bonding activities and teambuilding activities not only improve peer-to-peer relationships but also teacher-student relationships. There is also one-to-one interaction (or Student-Teacher Time) for teachers to get to know each child better and to identify needs and nurture character traits and dispositions.



Bonding activities on Teachers' Day celebrations

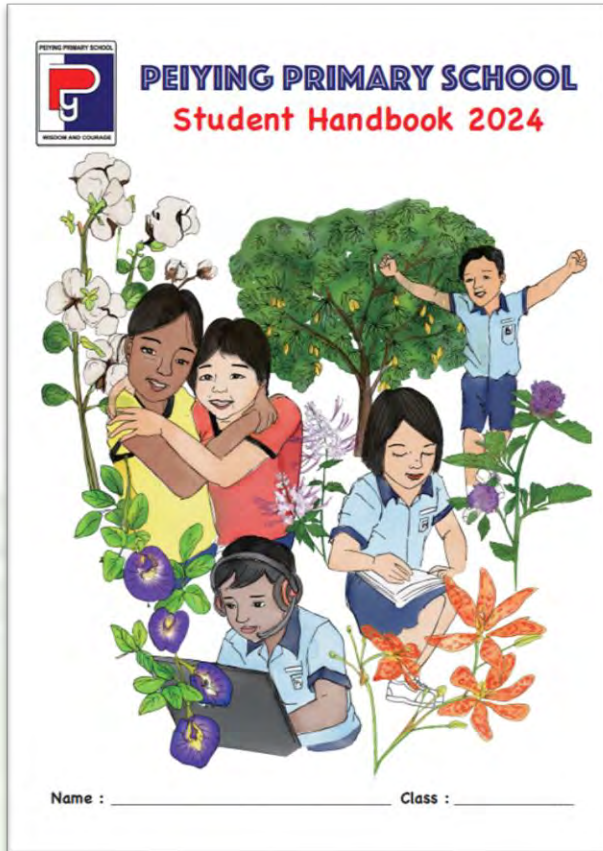


Teambuilding activities at start of the year



Nurturing Self-Discipline

We promote a whole-school approach to behavioural management encouraging positive behaviour so as to provide a safe and conducive environment for teaching and learning.

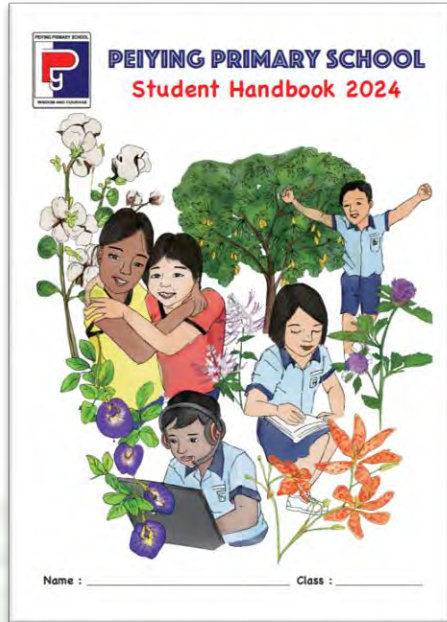


School rules and regulations
(Pg 18-23 of Student Handbook 2024)

Expected Behaviour in the canteen



Nurturing Self-Discipline and Partnering Parents



**School rules and regulations
(Pg 18-23 of Student Handbook 2024)**

I, _____ (name of student), have read and understood the above school rules and regulations. I will abide by the school rules and regulations so as to contribute to a safe and conducive learning environment for me and others.

I, _____ (name of parent/guardian) have read and understood the above school rules and regulations. I will do my part to support the school by monitoring my child's/ward's progress.

Signature of Student

Signature of Parent

Date

Acknowledgement of school rules in the Student Handbook 2024 (page 23). To be signed by student and parent/guardian. Thank you!



Meet the Form and Co-Form Teachers



Zoom Meeting Details (P1)

Form Teacher Session (3.00 pm to 3.30 pm)		Zoom Meeting ID	Zoom Meeting Passcode
1C	Form Teacher – Mr Darren Yeo Co-form Teacher – Mdm Ng Kang Ping	838 7455 5445	pyps1236
1D	Form Teacher – Mrs Linda Prem Co-form Teachers – Ms S Manomani & Ms Leanna Low	830 9270 2402	
1E	Form Teacher – Mrs Mala Bala Co-form Teacher – Mdm Lim See Voon	848 5322 3808	
1I	Form Teacher – Ms Ting Shu Han Co-form Teacher – Mdm Suzanah	793 626 8737	
1P	Form Teacher – Ms Joyce Ang Co-form Teacher – Mrs Veronica Tiang	844 5767 0246	
1R	Form Teacher – Ms Soh Mun Leng Co-form Teachers – Mrs Chan Khai Hong & Mdm Rajeswari	846 1591 4582	
1W	Form Teacher – Mdm Hazrida Co-form Teacher – Ms Ng Zi Chun	879 9787 7860	

Please log in using the following format:
[Class] Student Name
e.g. [1D] Wee Seng Chung



Zoom Meeting Details (P2)

Form Teacher Session (3.00 pm to 3.30 pm)		Zoom Meeting ID	Zoom Meeting Passcode
2D	Form Teacher – Ms Jacqueline Ten Co-form Teacher – Mr Riduwan	794 416 4364	pyps1236
2E	Form Teacher – Ms Vanitha Co-form Teachers – Mdm Yong Fook Lui & Ms Tan Zu Xian	830 4428 1198	
2I	Form Teacher – Ms Mary Or Co-form Teachers – Mdm Roslindah & Mdm Rita	824 5162 5126	
2P	Form Teacher – Mdm Chen Ying Co-form Teacher – Mdm Kalsa Ross	640 353 2165	
2R	Form Teacher – Mrs Asyaari Co-form Teachers – Ms Joyce Cheek & Mdm Daisy	926 176 3022	
2W	Form Teacher – Mrs Shallene Tan Co-form Teacher – Mr M Hassan Mohamed	847 0440 4777	

Please log in using the following format:
[Class] Student Name
e.g. [2C] Mary Chong





Peiying Primary School



THANK
YOU!

A large yellow pencil with a pink eraser and a grey band is positioned horizontally above the text. The text 'THANK YOU!' is written in a thick, black, hand-drawn font. The exclamation point is yellow and has a yellow dot below it.

Building Character, Enriching Lives, Stretching Potential